

"YOUR COMPLETE SERVICE CENTER"

Hot/Cold Rolled Sheets

GAUGE	DECIM. EQUIV.	WGHT PER SQ. FOOT	TOLERANCE + OR - ON NOMIN. THICKS		GAUGE	DECIM. EQUIV.	WGHT PER SQ. FOOT	TOLERANCE + OR - ON NOMIN. THICKS
			WIDTH 40 - 48"					COLD-ROLLED
			HOT-ROLL.	COLD-ROLL.				
4	.2242	9.375	.010	-	18	.0478	2.00	.004
5	.2092	8.75	.010	-	19	.0418	1.75	.004
6	.1943	8.125	.010	-	20	.0359	1.5	.003
7	.1793	7.5	.008	-	21	.0329	1.375	.003
8	.1644	6.875	.008	-	22	.0299	1.25	.003
9	.1495	6.25	.008	-	23	.0269	1.125	.003
10	.1345	5.625	.008	.006	24	.0239	1.00	.003
11	.1196	5.00	.008	.006	25	.0209	.875	.003
12	.1046	4.375	.008	.006	26	.0179	.75	.002
13	.0897	3.75	.007	.005	27	.0164	.688	.002
14	.0747	3.125	.007	.005	28	.0149	.625	-
15	.0673	2.812	.007	.005	29	.0135	.562	-
16	.0598	2.5	.007	.005	30	.0120	.5	-
17	.0538	2.25	-	.004	31	.0105	.4375	-

GALVANIZED SHEETS

GAUGE	DECIM. EQUIV.	WGHT PER SQ. FOOT	TOLERANCE + OR - ON NOMIN. THICKS		GAUGE	DECIM. EQUIV.	WGHT PER SQ. FOOT	TOLERANCE + OR - ON NOMIN. THICKS
			WIDTH 40 - 48"					COLD-ROLLED
			HOT-ROLL.	COLD-ROLL.				
8	.1681	7.031	.009	-	20	.0396	1.656	.004
9	.1532	6.406	.009	-	21	.0366	1.531	.004
10	.1382	5.781	.009	-	22	.0336	1.406	.004
11	.1233	5.156	.009	-	23	.0306	1.281	.004
12	.1084	4.531	.009	-	24	.0276	1.156	.004
13	.0934	3.906	.008	-	25	.0247	1.031	.004
14	.0785	3.281	.008	-	26	.0217	.906	.003
15	.0710	2.969	.006	-	27	.0202	.844	.003
16	.0635	2.656	.006	-	28	.0187	.781	.003
17	.0575	2.406	.005	-	29	.0172	.719	.003
18	.0516	2.156	.005	-	30	.0157	.656	.003
19	.0456	1.906	.005	-	31	.0142	.594	.003



"YOUR COMPLETE SERVICE CENTER"



**Universal Mill Steel Plates
ASTM A36**

Size in inches	Wt. per Ft., Lb.	Size in inches	Wt. per Ft., Lb.
$\frac{1}{4}$ x (10.21 lb. per sq. ft.)		$\frac{3}{4}$ x (30.63 lb. per sq. ft.)	
9	7.66	9	22.97
10	8.51	10	25.52
11	9.36	12	30.63
12	10.21		
$\frac{5}{16}$ x (12.76 lb. per sq. ft.)		$\frac{7}{8}$ x (35.74 lb. per sq. ft.)	
9	9.57	9	26.81
10	10.63	10	29.78
11	11.70	12	35.74
12	12.76		
$\frac{3}{8}$ x (15.32 lb. per sq. ft.)		1 x (40.84 lb. per sq. ft.)	
9	11.49	9	30.63
10	12.77	10	34.03
11	14.04	12	40.84
12	15.32		
$\frac{7}{16}$ x (17.87 lb. per sq. ft.)		$1\frac{1}{4}$ x (51.04 lb. per sq. ft.)	
9	13.40	10	42.53
10	14.89	12	51.04
12	17.87		
$\frac{1}{2}$ x (20.42 lb. per sq. ft.)		$1\frac{1}{2}$ x (61.26 lb. per sq. ft.)	
9	15.32	10	51.05
10	17.02	12	61.26
11	18.72		
12	20.42		
$\frac{5}{8}$ x (25.53 lb. per sq. ft.)		2 x (81.68 lb. per sq. ft.)	
9	19.15	10	68.06
10	21.27	12	81.68
12	25.53		

Steel Plates ASTM A36

Size in Inches	Wt. per Ft., Lb.	Size in Inches	Wt. per Ft., Lb.
$\frac{3}{16}$ x (7.66 lb. per sq. ft.)		$2\frac{3}{4}$ x (112.31 lb. per sq. ft.)	
$\frac{1}{4}$ x (10.21 lb. per sq. ft.)		3 x (122.52 lb. per sq. ft.)	
$\frac{5}{16}$ x (12.76 lb. per sq. ft.)		$3\frac{1}{4}$ x (132.72 lb. per sq. ft.)	
$\frac{3}{8}$ x (15.32 lb. per sq. ft.)		$3\frac{1}{2}$ x (142.93 lb. per sq. ft.)	
$\frac{7}{16}$ x (17.87 lb. per sq. ft.)		$3\frac{3}{4}$ x (153.14 lb. per sq. ft.)	
$\frac{1}{2}$ x (20.42 lb. per sq. ft.)		4 x (163.35 lb. per sq. ft.)	
$\frac{9}{16}$ x (22.97 lb. per sq. ft.)		$4\frac{1}{4}$ x (173.56 lb. per sq. ft.)	
$\frac{5}{8}$ x (25.53 lb. per sq. ft.)		$4\frac{1}{2}$ x (183.77 lb. per sq. ft.)	
$\frac{3}{4}$ x (30.63 lb. per sq. ft.)		$4\frac{3}{4}$ (194.98 lb. per sq. ft.)	
$\frac{13}{16}$ x (33.18 lb. per sq. ft.)		5 x (204.20 lb. per sq. ft.)	
$\frac{7}{8}$ x (35.74 lb. per sq. ft.)		$5\frac{1}{4}$ x (214.40 lb. per sq. ft.)	
1 x (40.84 lb. per sq. ft.)		$5\frac{1}{2}$ x (224.61 lb. per sq. ft.)	
$1\frac{1}{8}$ x (45.95 lb. per sq. ft.)		6 x (245.03 lb. per sq. ft.)	
$1\frac{1}{4}$ x (51.04 lb. per sq. ft.)		$6\frac{1}{4}$ x (255.24 lb. per sq. ft.)	
$1\frac{3}{8}$ x (56.16 lb. per sq. ft.)		$6\frac{1}{2}$ x (265.45 lb. per sq. ft.)	
$1\frac{1}{2}$ x (61.26 lb. per sq. ft.)		7 x (285.87 lb. per sq. ft.)	
$1\frac{5}{8}$ x (66.37 lb. per sq. ft.)		$7\frac{1}{2}$ x (306.29 lb. per sq. ft.)	
$1\frac{3}{4}$ x (71.47 lb. per sq. ft.)		8 x (316.71 lb. per sq. ft.)	
2 x (81.68 lb. per sq. ft.)		9 x (367.55 lb. per sq. ft.)	
$2\frac{1}{4}$ x (91.89 lb. per sq. ft.)		10 x (408.38 lb. per sq. ft.)	
$2\frac{1}{2}$ x (102.10 lb. per sq. ft.)		11 x (449.22 lb. per sq. ft.)	
		12 x (490.08 lb. per sq. ft.)	

"YOUR COMPLETE SERVICE CENTER"

Nom. Ga. & *Size in Inches	Weight Sq. Ft. Lb.	Stock Lengths Ft.	Nom. Ga. & *Size in Inches	Weight Sq. Ft. Lb.	Stock Lengths Ft.
$\frac{1}{8}$ x	(6.16 lb./sq. ft.)		$\frac{3}{8}$ x	(16.35 lb./sq. ft.)	
$\frac{3}{16}$ x	(8.70 lb./sq. ft.)		$\frac{1}{2}$ x	(21.47 lb./sq. ft.)	
$\frac{1}{4}$ x	(11.26 lb./sq. ft.)		$\frac{5}{8}$ x	(26.58 lb./sq. ft.)	
$\frac{5}{16}$ x	(13.82 lb./sq. ft.)		$\frac{3}{4}$ x	(31.68 lb./sq. ft.)	
			1 x	(41.89 lb./sq. ft.)	

FLOOR PLATES - DIAMOND PATTERN



Custom Stair Treads made to your specifications.

(See Page 33)

Shearing, Flame Cutting & Drilling.

Fax your Plate Requirements:

1-(973) 242-0176



STANDARD EXPANDED METAL

ALSO AVAILABLE IN STAINLESS & ALUMINUM

STANDARD EXPANDED METAL PRODUCT DETAILS-										measurements are approximate and subject to mill tolerances	
Style	Weight Per SF	Design Sizes		Opening Sizes		Strand Size		Overall Thickness	Meshes Per Foot		Open Area
		SWD	LWD	SWO	LWO	Thickness	Width		SWD	LWD	
CARBON STEEL-Standard (MIL-M-17194D Type I Class I) ASTM F 126791											
3/32 #24 S	.42#	.156"	.25"	.094"	.156"	.024"	.030"	.045"	-	-	58%
3/16 #22 S	.45#	.19"	.50"	.14"	.345"	.031"	.034"	.070"	63	24	61%
1/4 #20 S	.86#	.25"	1.0"	.14"	.718"	.036"	.072"	.135"	48	12	45%
1/4 #18 S	1.14#	.25"	1.0"	.145"	.718"	.048"	.072"	.147"	48	12	43%
1/2 #20 S	.43#	.50"	1.2"	.438"	.938"	.036"	.072"	.140"	24	10	80%
1/2 #18 S	.70#	.50"	1.2"	.438"	.938"	.048"	.088"	.172"	24	10	72%
1/2 #16 S	.86#	.50"	1.2"	.375"	.938"	.060"	.087"	.175"	24	10	65%
1/2 #13 S	1.47#	.50"	1.2"	.312"	.938"	.092"	.096"	.204"	24	10	57%
3/4 #16 S	.54#	.923"	2.0"	.813"	1.750"	.060"	.101"	.210"	13	6	78%
3/4 #13 S	.80#	.923"	2.0"	.750"	1.688"	.092"	.096"	.205"	13	6	76%
3/4 #10 S	1.20#	.923"	2.0"	.750"	1.625"	.092"	.144"	.290"	13	6	72%
3/4 #9 S	1.80#	.923"	2.0"	.688"	1.562"	.134"	.150"	.312"	13	6	68%
1#16 S	.44#	1.00"	2.4"	.938"	2.062"	.060"	.087"	.192"	12	5	82%
1-1/2 #16 S	.40#	1.33"	3.0"	1.250"	2.625"	.060"	.108"	.230"	9	4	85%
1-1/2 #13 S	.60#	1.33"	3.0"	1.188"	2.500"	.092"	.105"	.242"	9	4	85%
1-1/2 #10 S	.79#	1.33"	3.0"	1.188"	2.500"	.092"	.138"	.284"	9	4	80%
1-1/2 #9 S	1.20#	1.33"	3.0"	1.125"	2.375"	.134"	.144"	.312"	9	4	76%
1-1/2 #6 S	2.50#	1.33"	3.0"	1.110"	2.313"	.198"	.203"	.433"	9	4	69%
2 #9 S	.90#	1.85"	4.0"	1.563"	3.375"	.134"	.149"	.312"	6.5	3	84%



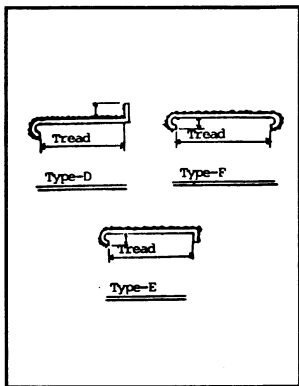
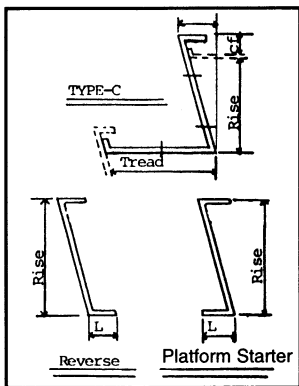
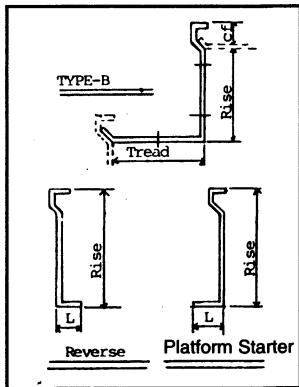
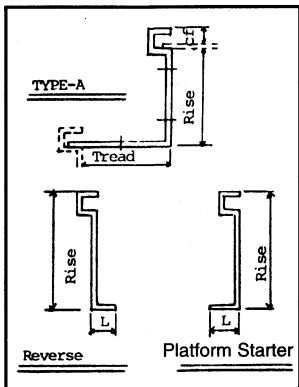
FLAT EXPANDED METAL

ALSO AVAILABLE IN STAINLESS & ALUMINUM

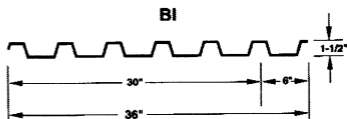
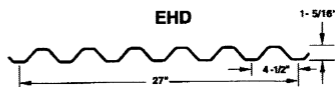
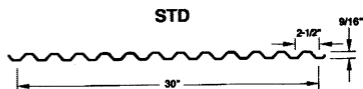
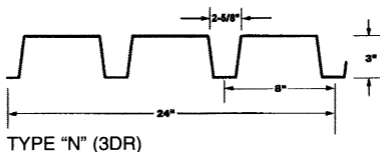
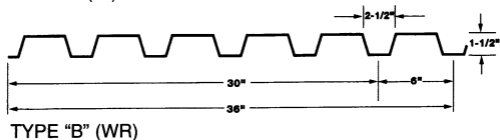
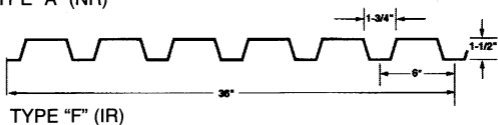
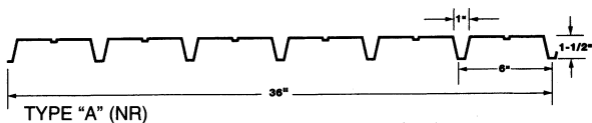
FLATTENED EXPANDED METAL PRODUCT DETAILS-											measurements are approximate and subject to mill tolerances
Style	Weight Per SF	Design Sizes		Opening Sizes		Strand Size		Overall Thickness	Meshes Per Foot		Open Area
		SWD	LWD	SWO	LWO	Thickness	Width		SWD	LWD	
CARBON STEEL-Flattened (MIL-M-17194D Type II Class I) ASTM f 126791											
3/16 #22 F*	.43#	.200"	.51"	.115"	.300"	.024"	.040"	.024"	427	71	55%
1/4 #20 F	.82#	.25"	1.05"	.110"	.715"	.030"	.079"	.030"	48	11.6	35%
1/4 #18 F	1.08#	.25"	1.05"	.118"	.715"	.040"	.080"	.040"	48	11.6	35%
1/2 #20 F	.40#	.50"	1.25"	.375"	1.00"	.029"	.079"	.029"	24	9.5	65%
1/2 #18 F	.66#	.50"	1.25"	.312"	1.00"	.039"	.097"	.039"	24	9.5	60%
1/2 #16 F	.82#	.50"	1.25"	.312"	1.00"	.050"	.096"	.050"	24	9.5	63%
1/2 #13 F	1.40#	.50"	1.25"	.265"	1.00"	.070"	.107"	.078"	24	9.5	52%
3/4 #16 F	.51#	.923"	2.10"	.750"	1.75"	.048"	.111"	.048"	13	5.7	74%
3/4 #14 F	.63#	.923"	2.10"	.688"	1.813"	.061"	.105"	.061"	13	5.7	74%
3/4 #13 F	.75#	.923"	2.10"	.688"	1.781"	.070"	.106"	.070"	13	5.7	74%
3/4 #9 F	1.71#	.923"	2.10"	.563"	1.688"	.120"	.165"	.120"	13	5.7	63%
1 #16 F	.41#	1.00"	2.50"	.813"	2.250"	.050"	.098"	.050"	12	4.68	78%
1-1/2 #16 F	.38#	1.33"	3.20"	1.062"	2.750"	.048"	.119"	.048"	9	3.75	83%
1-1/2 #14 F	.46#	1.33"	3.20"	1.062"	2.750"	.060"	.116"	.060"	9	3.75	80%
1-1/2 #13 F	.57#	1.33"	3.20"	1.062"	2.750"	.070"	.116"	.070"	9	3.75	80%
1-1/2 #9 F	1.44#	1.33"	3.20"	1.000"	2.563"	.110"	.158"	.110"	9	3.75	75%
2 #9 F	.85#	1.85"	4.27"	1.530"	3.590"	.105"	.186"	.105"	6.5	2.8	81%

*Minimum specifications shown. (Please inquire if specification critical.)

Stair Tread Designs



ROOF DECK



MULTI-RIB FORM DECK